



# Long Reach PoE

Extending your IP Network with existing cables

- IP camera over UTP wire/coaxial cable up to 500m/1km
- Easy cabling, quick installation
- 30W PoE+ Output
- PD Alive Check
- Scheduled Power Recycling
- 802.1Q VLAN/MSTP



## Enhanced Power Budget

PLANET PoE Solution provides full power budget to satisfy the increasing needs for power consumption of powered devices, such as wireless APs, IP phones, and IP cameras. Their IP-based, remote Web management interfaces also provide an effective central power management solution to monitor and control per port power feeding of deployed powered devices.



## Extending IP Networking Transmission

For long distance of IP networking transmission, PLANET integrated wireless and wired technologies, such as Ethernet, fiber and coaxial cables, with Power over Ethernet to deploy reliable IP networking fast and easily in any environments.

## Uniquely Intelligent PoE Management for Power Saving

In order to support users to conveniently manage the PoE system or end-span devices in the client site, PLANET has developed a unique and user-friendly Intelligent PoE Management function which effectively assists the IT managers in improving the efficiency of management, saving the cost of maintenance, and extending the life of products.



**PoE Intelligent Temperature Detection and Control function** automatically detects the temperature of the environment and operating product. If the operating product is over normal temperature, this function will be enabled automatically to prevent the product from damage.



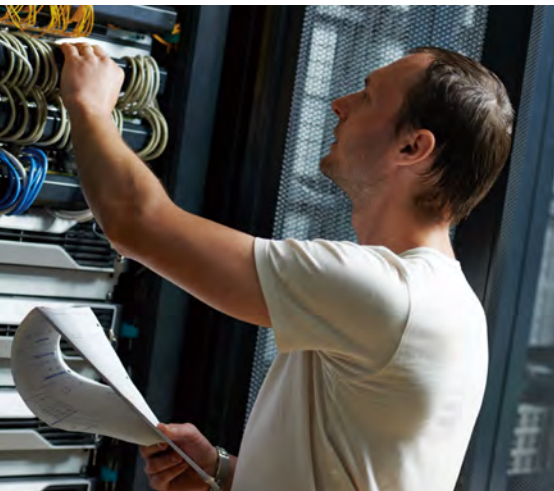
The **PoE Power Detection function** improves the working efficiency of IT manager. IT manager can check the total power consumption of all connected devices and power consumption of each connected device. In order to prevent connected devices from damage, this function is automatically enabled.

The **Auto-detected, connected devices function** supports not only standard IEEE PoE products but also non-PoE products. This function can automatically detect and identify whether connected devices such as IP camera comply with standard IEEE PoE 802.3af, 802.3at or non standard PoE. For eco-friendly and energy-saving design, this function will depend on the length of the Ethernet to provide the optimal power usage and identify the status of the connected devices. If IT manager installs non standard IEEE PoE devices, this function can protect the device and supply optimal power usage.

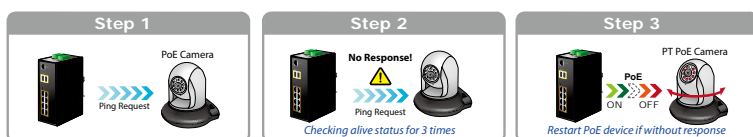




# Intelligent PoE Management Functions



## PoE PD Alive-checking

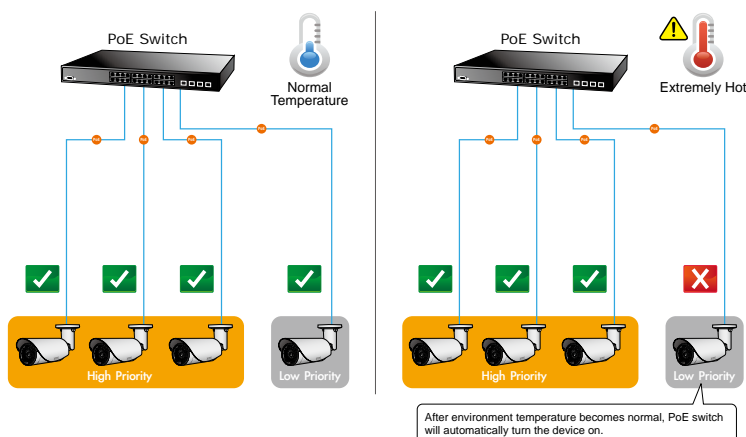
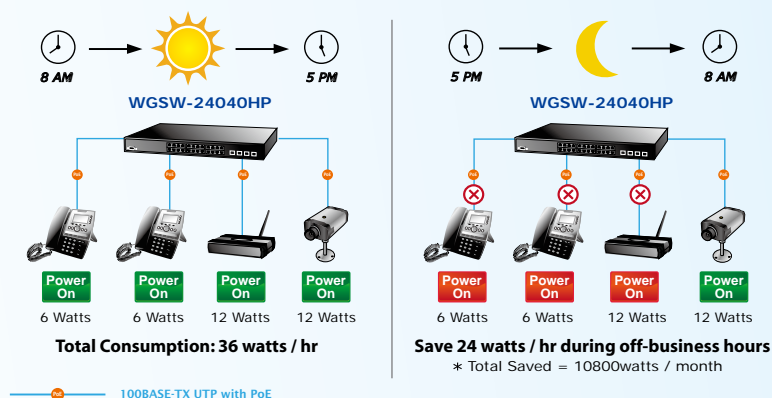


## Intelligent Powered Device Alive-Check

PLANET PoE switches can be configured to monitor connected PD (Powered Device) status in real time via ping action. It will greatly enhance the network reliability through the PoE port resetting the PD's power source and reducing administrator management burden.

## PoE Schedule for Energy Saving

The "PoE schedule" function helps you to enable or disable PoE power feeding for each PoE port during specified time intervals and it is a powerful function to help SMBs or enterprises save power and money.

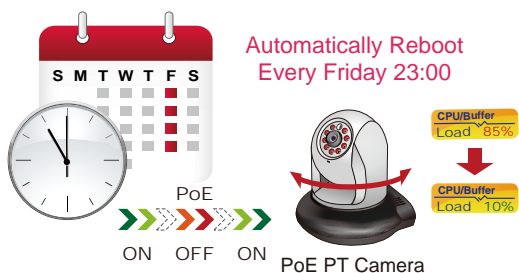
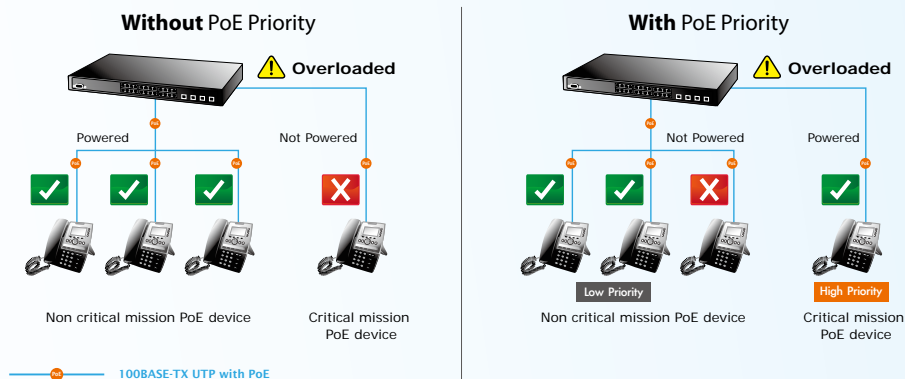


## PoE Over Temperature Protection

The automatic Over Temperature Protection helps to prevent power budget overloading while the temperature rises.

## PoE Priority for Critical Service

The PoE power budget can be allocated by priorities or classification and sent alert event logs when power usage reaches the defined threshold.

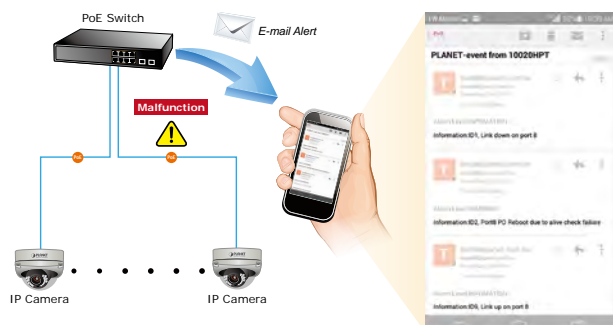


## Scheduled Power Recycling

PLANET PoE switches allow each of the connected PoE IP cameras or PoE wireless access points to reboot at a specific time each week. Therefore, it will reduce the chance of IP camera or AP crash resulting from buffer overflow.

## PoE Usage Monitoring

Via the power usage chart in the web management interface, PLANET PoE switches enable the administrator to monitor the status of the power usage of the connected PDs in real time.



## SMTP/SNMP Trap Event Alert

Though most NVR or camera management software offers SMTP email alert function, PLANET PoE Switches further provide event alert function to help to diagnose the abnormal device owing to whether or not there is a break of the network connection, loss of PoE power or the rebooting response by PD Alive Check process.

# Layer 3 802.3at PoE+ Stackable Managed Switch

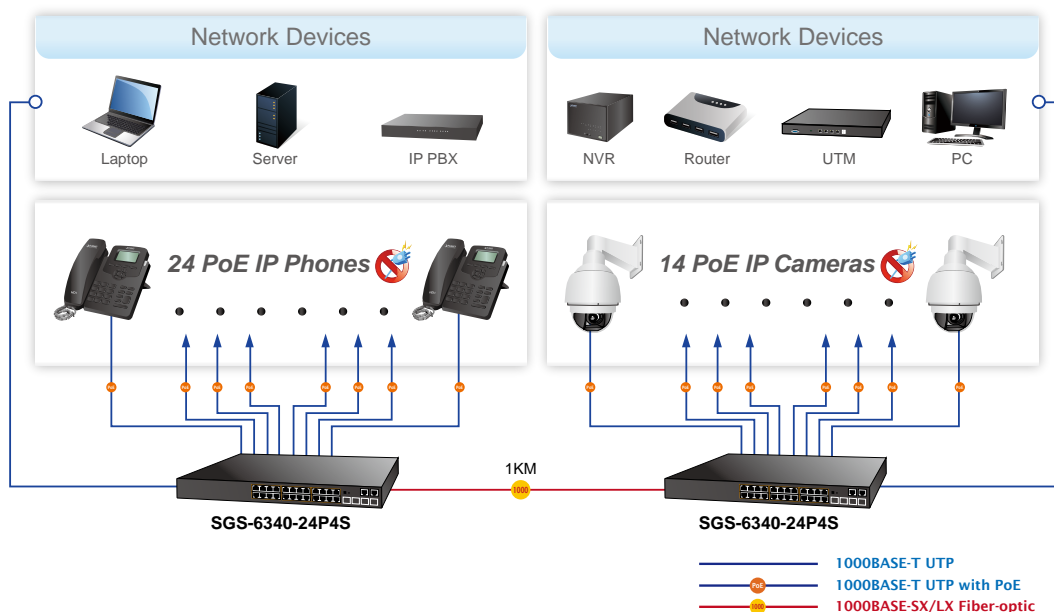


## SGS-6340-24P4S

- 10/100/1000BASE-T with 802.3at PoE+ x 24 ports
- 1000BASE-X SFP x 4 ports
- 370-watt PoE budget, up to 24 PoE
- Smart fan design for silent operation

PLANET SGS-6340-24P4S is a Layer 3 PoE Stackable Managed Gigabit Switch that provides high-density performance, Layer 3 static routing, RIP (Routing Information Protocol) and OSPF (Open Shortest Path First). With 56Gbps switching fabric, the SGS-6340-24P4S can handle extremely large amounts of data in a secure topology linking to an enterprise backbone or high capacity servers. The powerful WRR (Weighted Round Robin) and Network Security features make the SGS-6340-24P4S perform effective data traffic control for ISP and enterprise VoIP, video streaming, and multicast applications. The SGS-6340-24P4S has 24 IEEE 802.3at PoE+ ports and PoE budget up to 370 watts for catering to medium to large scale of VoIP or IP Surveillance networks at a lower total cost.

- Complies with IEEE 802.3at Power over Ethernet Plus, end-span PSE
- Supports PoE power up to 30 watts for each PoE port
- Remote PoE Power management and monitoring
- IP routing protocol: IPv4/IPv6 Layer 3 Static Routing, RIP and OSPF
- Single IP address management, supporting up to 24 units stacked together
- IEEE 802.1Q VLAN, Private VLAN, Q-in-Q and Voice VLAN
- Layer 2, 3 and 4 Access Control List
- Quality of Service (QoS)
- IEEE 802.1D/1w/1s Spanning Tree Protocol
- IGMP Snooping v1, v2 & v3 and querier mode
- Management interface – console, telnet, IPv6 and IPv4 Web, SNMP v1, v2c and v3, SSL and SSH



# L2+ 802.3at PoE+ Managed Gigabit Switches



To meet the PoE network applications requiring higher power supply with Gigabit speed transmission, PLANET L2+ 802.3at PoE+ Managed Switches provide user-friendly but advanced IPv6 and IPv4 management interfaces to bring out efficiently centralized High Power PoE management. It offers IPv4 and IPv6 VLAN routing feature which allows to crossover different VLANs and different IP addresses for the purpose of having a highly-secure, flexible management and simpler networking applications.

As an advanced PoE switch designed for non-stop surveillance or wireless networks, the L2+ Managed PoE switches feature intelligent PoE functions such as PD alive check, scheduled power recycling and over temperature protection to improve the availability of critical business applications. Time-based PoE schedule can be used to control PoE power feeding during specified time intervals to help companies and campuses to save power and money.

- Complies with IEEE 802.3at/af Power over Ethernet end-span PSE
- Supports PoE Power up to 30.8 watts for each PoE port
- Remote PoE power management and monitoring
- PoE models support PD alive check, PoE schedule, scheduled power recycling and over temperature protection
- IPv4 and IPv6 Layer 3 static routing
- IEEE 802.1Q VLAN, Private VLAN, Q-in-Q and Voice VLAN
- Layer 2, 3 and 4 Access Control List
- Quality of Service (QoS)
- IEEE 802.1D/1w/1s Spanning Tree Protocol
- IGMP snooping v1, v2 & v3 and querier mode
- Management interface – console, telnet
- IPv6 and IPv4 Web; SNMP v1, v2c and v3; SSL; and SSH
- DHCP snooping, ARP inspection and IP Source Guard
- DHCP Relay and DHCP Option 82

## WGSD-10020HP

- 10/100/1000BASE-T with IEEE 802.3at PoE+ x 8 ports
- 100/1000BASE-X x 2 ports
- 150-watt PoE budget, up to 8 PoE
- 13-inch desktop size, 1U rack-mount

## GS-5220-8P2T2S

- 10/100/1000BASE-T with 802.3at PoE+ x 8 ports
- 10/100/1000BASE-T x 2 ports
- 100/1000BASE-X SFP x 2 ports
- 240-watt PoE budget, up to 8 PoE
- 13-inch desktop size, 1U rack-mountable
- Smart fan design for silent operation

## WGSW-20160HP

- 10/100/1000BASE-T with 802.3at PoE+ x 16 ports
- 10/100/1000BASE-T x 4 ports
- 100/1000BASE-X SFP x 4 ports
- 230-watt PoE budget, up to 16 PoE

## WGSW-24040HP/WGSW-24040HP4

- 10/100/1000BASE-T with 802.3at PoE+ x 24 ports
- 100/1000BASE-X SFP x 4 ports
- 220 /440-watt PoE budget, up to 24 PoE

## WGSW-48040HP

- 10/100/1000BASE-T with 802.3at PoE+ x 48 ports
- 100/1000BASE-X SFP x 4 ports
- 600-watt PoE budget, up to 48 PoE
- 19-inch, 1U rack-mount

## XGSW-28040HP

- 10/100/1000BASE-T with 802.3at PoE+ x 24 ports
- 100/1000BASE-X SFP x 4 ports
- 1/10G SFP+ x 4 ports
- 440-watt PoE budget, up to 24 PoE
- Smart fan design for silent operation



## SGS-5220-24P2X

- 10/100/1000BASE-T with 802.3at PoE+ x 24 ports
- 100/1000BASE-X SFP x 4 ports
- 1/10G SFP+ uplink x 2 ports
- 10G SFP+ stacked x 2 ports
- 440-watt PoE budget, up to 24 PoE

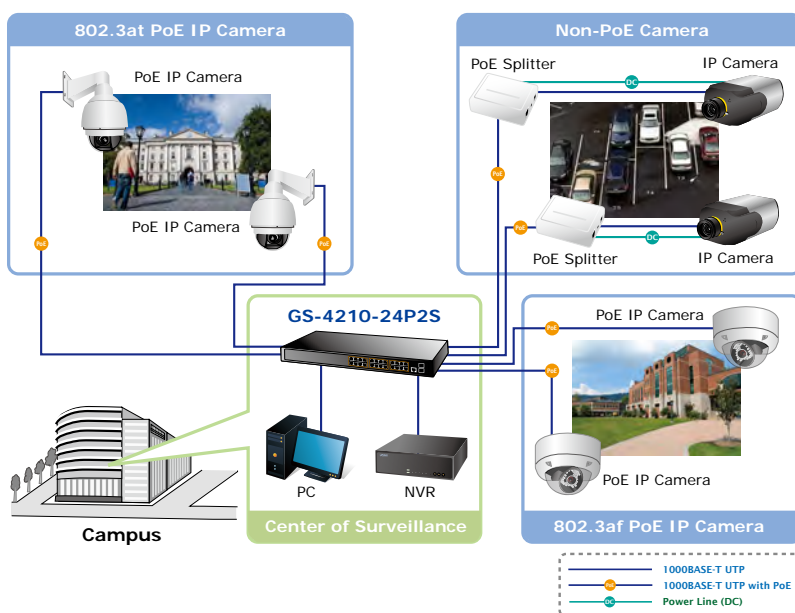


# L2/L4 802.3at PoE+ Managed Gigabit Switches



The 8-/24-port 10/100/1000BASE-T PoE in PLANET 802.3at PoE+ Managed Switches with 8/24 10/100/1000BASE-T PoE ports support both 802.3af and 802.3at PoE standards and allow users to flexibly connect standard and high powered devices simultaneously. To facilitate power management, the 802.3at PoE+ Managed Switches come with powerful PoE management features such as over temperature protection, usage threshold alert and auto power allocation to prevent power budget overloading. The PoE power budget can be allocated by priorities or classification and send alert event logs when power usage reaches the defined threshold.

- Complies with IEEE 802.3af/at Power over Ethernet end-span PSE
- Supports PoE power up to 30.8 watts for each PoE port
- Remote PoE power management and monitoring
- IEEE 802.1Q VLAN, Private VLAN and Q-in-Q
- Layer 3 and 4 Access Control List
- Quality of Service (QoS)
- IEEE 802.1D/1w Spanning Tree Protocol
- IGMP snooping v1 & v2, MLD snooping
- Management interface – console ; Telnet Web; SNMP v1, v2c & v3; SSL and SSH



## GS-4210-8P2S

- 10/100/1000BASE-T with 802.3at PoE+ x 8 ports
- 100/1000BASE-X SFP x 2 ports
- 110-watt PoE budget, up to 8 PoE
- PD alive check, scheduled power recycling and time-based PoE schedule
- 13-inch desktop size, 1U rack-mount
- Smart fan design for silent operation

## GS-4210-8P2T2S

- 10/100/1000BASE-T with 802.3at PoE+ x 8 ports
- 10/100/1000BASE-T x 2 ports
- 100/1000BASE-X SFP x 2 ports
- 240-watt PoE budget, up to 8 PoE
- PD alive check, scheduled power recycling and time-based PoE schedule
- 13-inch desktop size, 1U rack-mount
- Smart fan design for silent operation

## GS-4210-24P2S

- 10/100/1000BASE-T with 802.3at PoE+ x 24 ports
- 100/1000BASE-X SFP x 2
- 300-watt PoE budget, up to 24 PoE

## GS-4210-24P4C/GS-4210-24PL4C

- 10/100/1000BASE-T with 802.3at PoE+ x 24 ports
- 10/100/1000BASE-T x 4 ports
- 100/1000BASE-X SFP x 4 ports
- 220/440-watt PoE budget, up to 24 PoE
- PD alive check, scheduled power recycling and time-based PoE schedule
- Smart fan design for silent operation

## GS-4210-48P4S

- 10/100/1000BASE-T with 802.3at PoE+ x 48 ports
- 100/1000BASE-X SFP x 4 ports
- 440-watt PoE budget, up to 48 PoE
- PD alive check, scheduled power recycling and time-based PoE schedule
- Smart fan design for silent operation

## SGSW-24040P4

- 10/100/1000BASE-T with 802.3af PoE x 24 ports
- 100/1000BASE-X x 4 ports
- 380-watt PoE budget, up to 24 PoE
- Physical Stackable Architecture with up to 16 units

## SGSW-24040HP

- 10/100/1000BASE-T with 802.3at PoE+ x 24 ports
- 100/1000BASE-X x 4 ports
- 360-watt PoE budget, up to 24 PoE
- Physical Stackable Architecture with up to 16 units



## Web Smart PoE Switches

PLANET Web Smart 802.3af/at PoE switches provide a cost-effectiveness advantage to local area network and are widely accepted in SMB office network. They provide intelligent Layer 2 data packet switching and management functions, friendly web user interface, and stable operation. They also comply with Power over Ethernet (PoE) at an affordable price. The Web Smart PoE switches feature 4-port PoE to 24-port PoE choices to meet various customer requirements. They offer a rack-mountable, affordable, safe and reliable power solution for SMBs deploying PoE VoIP systems and PoE wireless networks, or requiring enhanced data security and network traffic management.

- Complies with IEEE 802.3at Power over Ethernet plus PSE
- Backward compatible with IEEE 802.3af PoE
- Supports PoE power up to 30 watts for each PoE+ port
- IEEE 802.1Q VLAN, Port-based VLAN
- Quality of Service (QoS)
- Broadcast storm control
- Web management interface

## Web Smart 802.3at PoE+ Switches



## Web Smart 802.3af PoE Switches



Web/SNMP Management

### FGSD-1008HPS

- 10/100BASE-TX with 802.3at PoE+ x 8 ports
- 10/100/1000BASE-T x 2 ports
- 1000BASE-X SFP x 2 ports
- 125-watt PoE budget, up to 8 PoE
- 13-inch desktop size, 1U rack-mount

### FGSW-1816HPS

- 10/100BASE-TX with 802.3at PoE+ x 16 ports
- 10/100/1000BASE-T x 2 ports
- 1000BASE-X SFP x 2 ports
- 220-watt PoE budget, up to 16 PoE
- 19-inch, 1U rack-mount

### FGSW-2624HPS/FGSW-2624HPS4

- 10/100BASE-TX with 802.3at PoE+ x 24 ports
- 10/100/1000BASE-T x 2 ports
- 1000BASE-X SFP x 2 ports
- 220-/420-watt PoE budget, up to 24 PoE
- 19-inch, 1U rack-mount

### FSD-804PS

- 10/100BASE-TX with 802.3af PoE x 4 ports
- 10/100BASE-TX x 4 ports
- 60-watt PoE Budget, up to 4 PoE
- 10-inch desktop size, 1U rack-mount

### FNSW-1608PS

- 10/100BASE-TX with 802.3af PoE x 16 ports
- 10/100BASE-TX x 8 ports
- 110-watt PoE budget, up to 8 PoE
- 19-inch, 1U rack-mount

### FNSW-2400PS

- 10/100BASE-TX with 802.3af PoE Injector x 24 ports
- 125-watt PoE budget, up to 24 PoE
- 19-inch, 1U rack-mount

### FGSW-1828PS

- 10/100BASE-TX with 802.3af PoE x 8 ports
- 10/100BASE-TX x 8 ports
- 10/100/1000BASE-T x 2 ports
- 1000BASE-X x 2 ports
- 110-watt PoE budget, up to 8 PoE
- 19-inch, 1U rack-mount



# Unmanaged Gigabit PoE/PoE+ Switches

## Centralized Power Distribution for Ethernet Networking

PLANET Unmanaged PoE Switches are ideal for small businesses and workgroups to deploy the PoE network like wireless access points, IP-based surveillance camera or IP phones in any places easily and efficiently. The Unmanaged PoE Switches also provide a simple, cost-effective and non-blocking wire-speed performance for deployment in rack environment, SOHO office or department PoE network application.

## Easy and Cost-effective PoE Network Deployment

Each of the PoE injector ports in the Unmanaged PoE Switch can transmit power along with data over a single Ethernet cable to remote powered device at the distance up to 100 meters with no need of software configuration. The Unmanaged PoE Switch will reduce the need of cables and dedicated electrical outlets on the wall, ceiling or any unreachable place. It helps to lower the installation costs, simplify the installation effort and eliminate the need for electricians or extension cords.

- Complies with IEEE 802.3af/at Power over Ethernet end-/mid-span PSE
- Supports PoE power up to 15.4/30.8 watt for each PoE port
- Remote Power Feeding up to 100m
- Auto detects powered device (PD)
- Auto-negotiation and auto MDI/MDI-X
- Automatic address learning and address aging

### GSD-804P

- 10/100/1000BASE-T with 802.3af PoE x 4 ports
- 10/100/1000BASE-T x 4 ports
- 55-watt PoE budget, up to 4 PoE
- 10-inch, 1U rack-mount



### GSD-604HP

- 10/100/1000BASE-T with 802.3at PoE+ x 4 ports
- 10/100/1000BASE-T x 2 ports
- 55-watt PoE budget, up to 4 PoE
- Port-based VLAN and loop protection via DIP selection
- Compact size, wall-mount



### GSD-908HP

- 10/100/1000BASE-T with 802.3at PoE+ x 8 ports
- 10/100/1000BASE-T x 1 port
- 120-watt PoE budget, up to 8 PoE
- Compact size, wall-mount and magnetic wall mount



### GSD-808HP

- 10/100/1000BASE-T with 802.3af/at PoE x 8 ports
- 130-/240-watt PoE budget, up to 8 PoE
- 12-inch, 1U rack-mount



### GSD-808HP2

- 10/100/1000BASE-T with 802.3af/at PoE x 8 ports
- 130-/240-watt PoE budget, up to 8 PoE
- 12-inch, 1U rack-mount



### GSW-1600HP

- 10/100/1000BASE-T with 802.3at PoE+ x 16 ports
- 220-watt PoE Power budget, up to 16 PoE
- 19-inch, 1U rack-mount



### GSW-2620HP

- 10/100/1000BASE-T with 802.3at PoE+ x 24 ports
- 1000BASE-X SFP x 2 slots
- 220-watt PoE Power budget, up to 24 PoE
- 19-inch, 1U rack-mount



## Unmanaged Fast Ethernet PoE/PoE+ Switches

### FSD-504HP

- 10/100BASE-TX with 802.3at PoE+ x 4 ports
- 10/100BASE-TX x 1 port
- 60-watt PoE budget, up to 4 PoE
- Extend power + data and port-based VLAN via DIP selection
- Compact size, wall-mount



### FSD-804P

- 10/100BASE-TX with 802.3af PoE x 4 ports
- 10/100BASE-TX x 4 ports
- 55-watt PoE budget, up to 4 PoE
- 10-inch, 1U rack-mount



### FSD-808P/FSD-808HP

- 10/100BASE-TX with 802.3af PoE x 8 ports (FSD-808P)
- 10/100BASE-TX with 802.3at PoE+ x 8 ports (FSD-808HP)
- 125-/140-watt PoE Budget, up to 8 PoE
- 12-inch, 1U rack-mount



### FGSD-910P/FGSD-910HP

- 10/100BASE-TX with 802.3af PoE x 8 ports (FGSD-910P)
- 10/100BASE-TX with 802.3at PoE+ x 8 ports (FGSD-910HP)
- 10/100/1000BASE-T x 1 port
- 120-watt PoE budget, up to 8 PoE
- 12-inch, 1U rack-mount



### FNSW-1600P

- 10/100BASE-TX with 802.3af PoE x 16 ports
- 125-watt PoE budget, up to 16 PoE
- 19-inch, 1U rack-mount



## Industrial Flat-type PoE+ Switches

### Easily-deployed and Expanded PoE Network

Designed to be installed in a wall enclosure or simply mounted at any convenient location on a wall, PLANET Industrial Flat-type PoE+ Switches are an ideal solution to meeting the demand of sufficient PoE power for the network applications such as building/home automation network, Internet of things (IoT), and wired and wireless IP surveillance.

### Innovative Wall-mount Installation

The Industrial Flat-type PoE+ Switches adopt "Front Access" design, making the installing, cable wiring, LED monitoring and maintenance of the Industrial Flat-type PoE+ Switches placed in an enclosure easier for technicians to manage. Its magnetic wall mounting or DIN rail installation enables its efficient use of enclosure space, thereby making its usability more flexible.

### WGS-804HPT

- 4-port 10/100/1000BASE-T with 802.3at PoE+
- 4-port 10/100/1000BASE-T
- -40 to 75 degrees C wide operating temperature
- 48~56V DC redundant power
- Compact size, wall-mounted, magnetic wall mount and DIN-rail design
- IPv6 and IPv4 Web, Telnet and SNMP management
- 802.1Q VLAN, MSTP and IGMP snooping
- LED indicators for PoE usage and status



### WGS-804HP

- 4-port 10/100/1000BASE-T with 802.3at PoE+
- 4-port 10/100/1000BASE-T
- -10 to 60 degrees C wide operating temperature
- 48~56V DC redundant power
- Compact size, wall-mounted, magnetic wall mount and DIN-rail design
- LED indicators for PoE usage and status



# 802.3af/at PoE Injector Hubs

## Quick and Easy PoE Network Deployment

PLANET 802.3af/at PoE Injector Hubs are 4-/12-/24-port IEEE 802.3af/at Power over Ethernet injector hubs and comply with IEEE 802.3, IEEE 802.3u, IEEE 802.3af and IEEE 802.3at standards. This device supports PoE power for any remote IEEE 802.3af/at powered device (PD) like wireless LAN access point, IP phone, and IP camera.

## Easy Cabling Installation

The 802.3af/at PoE Injector Hubs are installed between a regular Ethernet Switch and powered devices; they inject power to the PDs without affecting the data transmission performance. They offer a cost effective and quick solution to upgrading network system to IEEE 802.3af/at Power over Ethernet system without replacing the existing Ethernet Switch.

- Complies with IEEE 802.3af/at Power over Ethernet mid-span PSE
- PoE power up to 15.4/30.8-watt for each PoE port
- Remote power feeding up to 100m
- Full power support for each PoE port
- Automatically detects the powered device (PD)
- Indication of LED indicator power input
- 100~240VAC, 50/60Hz, universal power supply

### POE-400

- 10/100BASE-TX "Data" input x 4 ports
- 10/100BASE-TX "Data + Power" output x 4 ports
- 60-watt PoE budget, up to 4 PoE
- PoE Power up to 15.4 watts for each PoE port
- Compact size, wall-mount



### POE-1200G

- 10/100/1000BASE-T "Data" input x 12 ports
- 10/100/1000BASE-T "Data + Power" output x 12 ports
- 220-watt PoE budget, up to 12 PoE
- PoE Power up to 30.8 watts for each PoE port
- Web management interface
- SNMP Trap and PoE schedule
- 19-inch, 1U rack-mount



### POE-2400G

- 10/100/1000BASE-T "Data" input x 24 ports
- 10/100/1000BASE-T "Data + Power" output x 24 ports
- 440 watt PoE budget, up to 24 PoE
- PoE Power up to 30.8 watts for each PoE port
- Web management interface
- SNMP Trap and PoE schedule
- 19-inch, 1U rack-mount



### HPOE-460

- 10/100/1000BASE-T "Data" input x 4 ports
- 10/100/1000BASE-T "Data + Power" output x 4 ports
- 120-watt PoE budget, up to 4 PoE
- PoE Power up to 30.8 watts for each PoE port
- Compact size, wall-mount



### HPOE-1200G

- 10/100/1000BASE-T "Data" input x 12 ports
- 10/100/1000BASE-T "Data + Power" output x 12 ports
- 360-watt PoE budget, up to 12 PoE
- PoE Power up to 30.8 watts for each PoE port
- Web management interface
- SNMP Trap and PoE schedule
- 19-inch, 1U rack-mount



### HPOE-2400G

- 10/100/1000BASE-T "Data" input x 24 ports
- 10/100/1000BASE-T "Data + Power" output x 24 ports
- 720-watt PoE budget, up to 24 PoE
- PoE Power up to 30.8 watts for each PoE port
- Web management interface
- SNMP Trap and PoE schedule
- 19-inch, 1U rack-mount



# PoE Extenders

## POE-E Series

PLANET PoE Extenders are a newly-designed and simple device which extends both the reach of Ethernet data and power over the standard 100m (328 ft.) Cat5e/6 UTP cable to 200m, 300m or longer distance.

- Extends the range of PoE by an additional 100 meters (328ft.)
- Forwards both Ethernet data and PoE power to remote devices
- Multiple units, daisy-chain installation supported
- No external power cable required for installation
- Compact size, wall-mount
- Plug and Play

### POE-E101

- 10/100BASE-TX "Data + Power" output x 1 port
- 10/100BASE-TX "Data + Power" input x 1 port
- Complies with IEEE 802.3af Power over Ethernet mid-span
- Maximum extender distance up to 300m



### POE-E201

- 10/100/1000BASE-T "Data + Power" output x 1 port
- 10/100/1000BASE-T "Data + Power" input x 1 port
- Complies with IEEE 802.3af/at Power over Ethernet mid-span
- Maximum extender distance up to 500m



### IPOE-E202

- 10/100/1000BASE-T "Data + Power" input x 1 shielded RJ-45 port
- 10/100/1000BASE-T "Data + Power" output x 2 shielded RJ45 ports
- Complies with IEEE 802.3af Power over Ethernet mid-span
- Max. total PoE budget up to 25 watts
- -40 to 75 degrees C operating temperature
- Extends Cat.5 cable installations to beyond 100 meters



# 802.3af PoE Single-port Injectors/Splitters

## POE Series

PLANET 802.3af PoE Single-port Injectors follow IEEE 802.3af Power over Ethernet standard to insert DC 48 voltage into Cat.5 cable, allowing the cable between the injector and splitter to transfer data and power simultaneously. The maximum distance between the injector and splitter is 100 meters. For the cost saving and power management purposes, the 802.3af PoE Single-port Injector is the ideal IEEE 802.3af Power over Ethernet device that splits the 48V DC over the Ethernet cable into 5V/12V DC power output. What's more, upon any IEEE 802.3af devices being installed, the 802.3af PoE Single-port Injector or together with 802.3af PoE Single-port Splitter can make the connection while migrating or splitting the power and the Ethernet digital packets, such as connecting the 802.3af PoE Single-port Injector to an IEEE 802.3af complied device, AP or IP phone.

- Complies with IEEE 802.3af Power over Ethernet
- Data and power transmission distance up to 100 meters
- Maximum power up to 15.4 watts
- Auto-detection of PoE IEEE 802.3af equipment and devices from being damaged by incorrect installation
- Desktop size, wall-mount

### FTP-802/802S15

- 10/100BASE-TX "Data + Power" output x 1 port
- 100BASE-FX "Data" input x 1 port
- End-span PSE
- Made of metal



### POE-151

- 10/100BASE-TX "Data" input x 1 port
- 10/100BASE-TX "Data + Power" output x 1 port
- Mid-span PSE
- Made from plastic



### POE-152

- 10/100/1000BASE-T "Data" input x 1 port
- 10/100/1000BASE-T "Data + Power" output x 1 port
- End-span PSE
- Made from plastic



### POE-152S

- 10/100/1000BASE-T "Data" output x 1 port
- 10/100/1000BASE-T "Data + Power" input x 1 port
- Power output: 5V/12 V DC, max.2A
- Made from plastic



### PL-502P

- Designed for home surveillance and wireless applications
- Homeplug AV adapter along with IEEE 802.3af PoE injector
- Up to 15 watts of inline power for PoE IP cameras or wireless APs
- Data transfer over the existing household power circuit
- Directly attached to power outlets
- Easy Two-touch setup





# 802.3at PoE+ Single-port Gigabit Injectors/Splitters



## POE/IPOE/GTP Series

PLANET 802.3at PoE+ Single-port Injectors follow IEEE 802.3at Power over Ethernet standard to insert DC 56 voltage into Cat.5 cable, allowing the cable between the injector and splitter to transfer data and power simultaneously. The maximum distance between the injector and splitter is 100 meters. For the cost saving and power management purposes, the 802.3at PoE+ Single-port Injector is the ideal IEEE 802.3at Power over Ethernet device that splits the 56V DC over the Ethernet cable into 12V/24V DC power output.

- Complies with IEEE 802.3af/at Power over Ethernet
- Data and power transmission distance up to 100 meters
- Maximum power up to 30.8 watts
- Auto-detection of PoE+ IEEE 802.3at equipment and devices from being damaged by incorrect installation
- Desktop size, wall-mount

### GTP-805A

- 10/100/1000BASE-T "Data + Power" output x 1 port
- 1000BASE-X "Data" input x 1 port
- Mid-span PSE
- Made of metal



### POE-161

- 10/100/1000BASE-T "Data" input x 1 port
- 10/100/1000BASE-T "Data + Power" output x 1 port
- Mid-span PSE
- Made from plastic



### POE-162S

- 10/100/1000BASE-T "Data" output x 1 port
- 10/100/1000BASE-T "Data + Power" input x 1 port
- Power output: 12V/24V DC, max.2A
- Made from plastic



### POE-163

- 10/100/1000BASE-T "Data" input x 1 port
- 10/100/1000BASE-T "Data + Power" output x 1 port
- Mid-span PSE
- Plastic compact size, internal 100-240V AC power supply



### POE-164

- 10/100BASE-TX "Data" input x 1 port
- 10/100BASE-TX "Data + Power" output x 1 port
- Mid-span PSE
- Plastic compact size, internal 100-240V AC power supply



### POE-165S

- Power input - complies with IEEE 802.3af/at Power over Ethernet
- Power output - passive Power over Ethernet injector
- Supports 12V/19V/24V DC power output by DIP switch
- -40 to 75 degrees C wide operating temperature
- Compact size, wall-mount



### IGTP-805AT

- 100/1000BASE-X single/ multi mode LC (SFP interface)
- 10/100/1000BASE-T with 802.3at PoE+ x 1-port
- Link Fault Pass-through (LFP) support
- -40 to 75 degrees C operating temperature
- IP30 metal case, DIN-rail and wall-mount



### IPOE-162

- 10/100/1000BASE-T "Data" input x 1 port
- 10/100/1000BASE-T "Data + Power" output x 1 port
- -40 to 75 degrees C operating temperature
- IP30 metal case, DIN-rail and wall-mount



### IPOE-162S

- 10/100/1000BASE-T "Data" output x 1 port
- 10/100/1000BASE-T "Data + Power" input x 1 port
- Power output: 12V/24V DC, max.2A
- -40 to 75 degrees C operating temperature
- IP30 metal case, DIN-rail and wall-mount



## 60-watt Ultra PoE Series

PLANET 60-watt Ultra PoE Series includes switches, hubs, extenders, injectors and splitters to simultaneously transmit data and power up to 60 watts to high power consumption of powered devices such as POS systems, speed dome IP cameras, all-in-one PCs and more. From single port to multiple ports, PLANET 60-watt Ultra PoE Series provides a complete solution to all kinds of PoE applications for retailers, restaurants, hospitals, banks, enterprises, buildings, industries, and more where both power and data transmission can be stably had.

### 60-watt Ultra PoE Injectors

#### POE-171

- Up to 60 watts of PoE power on 4-pair UTP
- Data and power over one Ethernet cable up to 100 meters
- Backward compatible with IEEE 802.3at/af PD device
- Supports 10/100/1000BASE-T applications

60W  
PoE



#### POE-173

- Up to 60 watts of PoE power on 4-pair UTP
- Data and power over one Ethernet cable up to 100 meters
- Backward compatible with IEEE 802.3at/af PD device
- Supports 10/100/1000BASE-T applications

60W  
PoE

Internal  
Power



#### IPOE-171

- Up to 60 watts of PoE power on 4-pair UTP
- Data and power over one Ethernet cable up to 100 meters
- Backward compatible with IEEE 802.3at/af PD device
- Supports 10/100/1000BASE-T applications
- -40 to 75 degrees C wide operating temperature
- IP30 metal case, DIN-rail and wall-mount

75°C  
-40°C

60W  
PoE



### 60-watt Ultra PoE Splitter

#### POE-171S

- 10/100/1000BASE-T "Data" output x 1 port
- 10/100/1000BASE-T "Data + Power" input x 1 port
- Up to 50-watt PoE power output
- Supports 12V/19V/24V DC power output by DIP switch

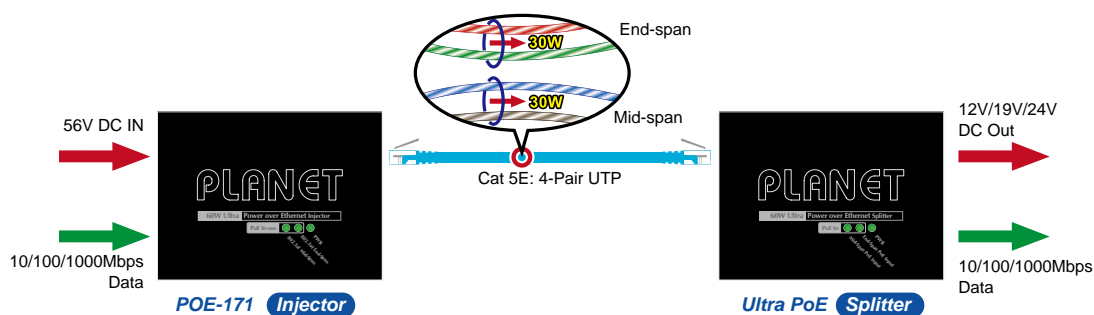


#### IPOE-171S

- 10/100/1000BASE-T "Data" output x 1 port
- 10/100/1000BASE-T "Data + Power" input x 1 port
- Up to 50-watt PoE power output
- Supports 12V/19V/24V DC power output by DIP switch
- -40 to 75 degrees C wide operating temperature
- IP30 metal case, DIN-rail and wall-mount

75°C  
-40°C

12/24V DC  
Output



## 60-watt Ultra PoE Extender

### IPOE-E174

- Forwards both Ethernet data and in-line power to 4 remote devices
- 1-port ultra Power over Ethernet PD
- 4-port IEEE 802.3af/at Power over Ethernet/end-span PSE
- Supports PoE output power up to 30.8 watts for each PoE port
- Extends the range of PoE for an additional 100 meters (328ft.)
- -40 to 75 degrees C wide operating temperature
- No external power cable required for installation
- Plug and Play, no software required



## 60-watt Ultra PoE Gigabit Switches

### GS-4210-16UP4C

- 10/100/1000BASE-T with ultra PoE x 16 ports
- 10/100/1000BASE-T x 4 ports
- 100/1000BASE-X SFP x 4 ports
- IPv6 and IPv4 Web, Telnet and SNMP management
- 802.1Q VLAN, MSTP and IGMP Snooping
- Up to 60 watts of PoE power on 4-pair UTP
- 400-watt PoE budget, up to 16 PoE
- PD alive check, scheduled power recycling and time-based PoE schedule
- Smart fan design for silent operation
- 19-inch, 1U rack-mount



### GS-4210-24UP4C

- 10/100/1000BASE-T with ultra PoE x 24 ports
- 10/100/1000BASE-T x 4 ports
- 100/1000BASE-X SFP x 4 ports
- IPv6 and IPv4 Web, Telnet and SNMP management
- 802.1Q VLAN, MSTP and IGMP Snooping
- Up to 60 watts of PoE power on 4-pair UTP
- 600-watt PoE budget, up to 16 PoE
- PD alive check, scheduled power recycling and time-based PoE schedule
- Smart fan design for silent operation
- 19-inch, 1U rack-mount



### IGS-5225-4UP1T2S

- 4-port 10/100/1000BASE-T with 60W/802.3at PoE
- 1-port 10/100/1000BASE-T
- 2-port 100/1000BASE-X SFP
- IPv6 and IPv4 Web, Telnet and SNMP management
- 802.1Q VLAN, MSTP and IGMP snooping
- E.R.P.S ring supported
- Static route supported
- -40 to 75 degrees C wide operating temperature
- DI and DO supported



## 60-watt Ultra PoE Injector Hubs

### HPOE-800UG

- 10/100/1000BASE-T "Data" input x 8 ports
- 10/100/1000BASE-T "Data + Power" output x 8 ports
- 400-watt PoE budget, up to 8 PoE
- PoE Power up to 60 watts for each PoE port
- Web management interface
- SNMP Trap and PoE schedule
- 19-inch, 1U rack-mount



### HPOE-1600UG

- 10/100/1000BASE-T "Data" input x 16 ports
- 10/100/1000BASE-T "Data + Power" output x 16 ports
- 600-watt PoE budget, up to 16 PoE
- PoE Power up to 60 watts for each PoE port
- Web management interface
- SNMP Trap and PoE schedule
- 19-inch, 1U rack-mount



# Long Reach PoE L2/L4 IPv6 Managed Switches

## LRP Series



PLANET Long Reach PoE (LRP) solution is designed to extend IP Ethernet transmission and inject power over an existing coaxial cable for distance up to 1000m (3280ft) into PoE IP camera, PoE wireless AP and any 802.3af/at compliant powered device (PD).

The Long Reach PoE solution consists of an LRP switch/injector and LRP Extender which can work without any power adapter anywhere on your network infrastructure. It is a perfect solution for sending IP video links and power to remote PoE IP camera installation that is beyond the 100-meter distance limit of Ethernet.

- Re-use the existing coaxial cable that eliminates power cabling with Power over coaxial(PoC)
- Data and Power over coaxial up to 1km
- Up to 36-watt power output per PoC port
- PD alive check, scheduled power recycling and time-based PoE schedule
- IEEE 802.1Q VLAN, Q-in-Q, Private VLAN and GVRP
- IEEE 802.1w RSTP, IEEE 802.1s MSTP and loop protection
- IGMP snooping v2 and v3 and MLD snooping
- QoS, Voice VLAN and bandwidth control
- Layer 2, 3 and 4 Access Control List
- IPv4 and IPv6 Web interface; Telnet; SNMP v1, v2c and v3; SSH; and SSL management

### LRP-822CS

- Long Reach PoE over coaxial x 8 ports
- 100/100/1000BASE-T x 2 ports
- 100/1000BASE-X SFP x 2 ports
- 240-watt PoE budget, up to 8 Long Reach PoE
- Up to 36 watts per PoC port
- Power over coaxial up to 1km



### LRP-1622CS

- Long Reach PoE over coaxial x 16 ports
- 100/100/1000BASE-T x 2 ports
- 100/1000BASE-X SFP x 2 ports
- 440-watt PoE budget, up to 16 Long Reach PoE
- Up to 36 watts per PoC port
- Power over coaxial up to 1km



### LRP-422CST

- Long Reach PoE over coaxial x 4 ports
- 100/100/1000BASE-T x 2 ports
- 100/1000BASE-X SFP x 2 ports
- 150-watt PoE budget, up to 4 Long Reach PoE
- Up to 36 watts per PoC port
- Power over coaxial up to 1km
- -40 to 75 degrees C operating temperature
- IP30 metal case, DIN-rail and wall-mount



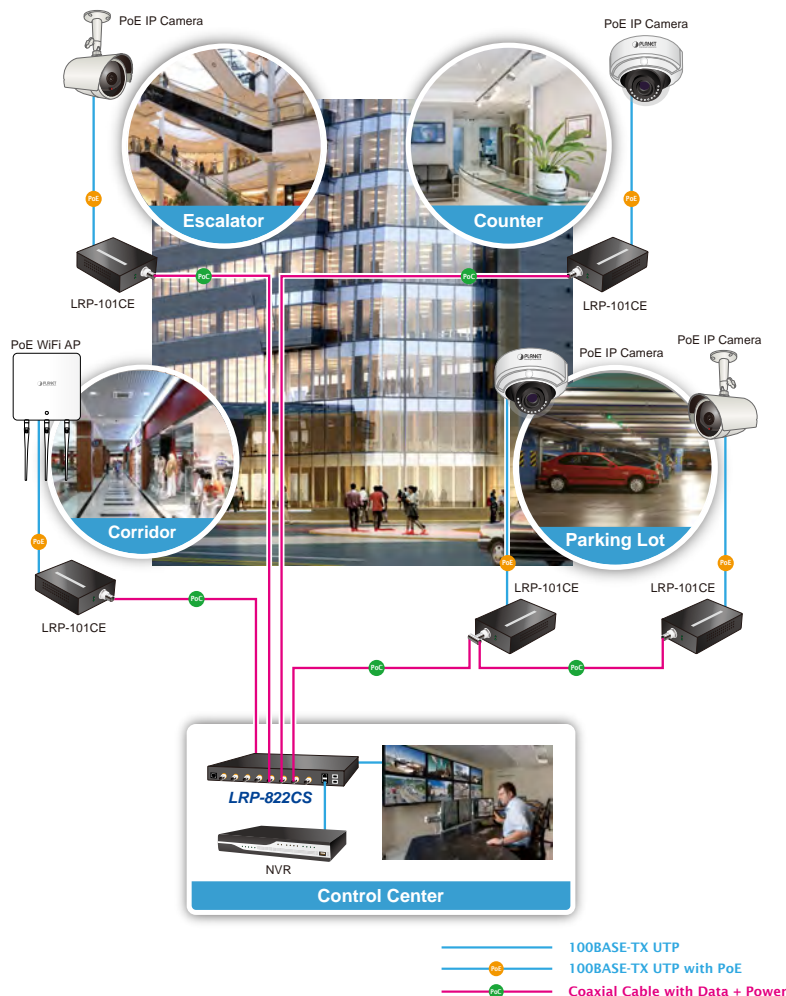


# Long Reach PoE Injectors/Extenders

## LRP-101 series



The LRP-101CE/LRP-101UE PoE Extender, which sources power from the LRP switch or LRP injector, is a Single-port, 802.3at High Power over Ethernet Injector providing a maximum of up to 25 watts of power output over Ethernet cable which allows data and power to transmit simultaneously through the cable to PoE PD (Powered Device).



### LRP-101CH

#### Single Port Injector

- 1-port BNC with passive PoE PSE
- 1-port 10/100TX RJ45 with 802.3at PoE+ Input
- -20 ~ 70 degrees C wide operating temperature
- Power over coaxial up to 1km



### LRP-101UH

- 1-port UTP with passive PoE PSE
- 1-port 10/100TX RJ45 with 802.3at PoE+ Input
- -20 ~ 70 degrees C wide operating temperature
- Power over UTP up to 500m



### LRP-101CE

#### Single Port Extender

- 1-port BNC with passive PoE PD
- 1-port 10/100TX RJ45 with 802.3at PoE+ PSE to remote PoE IP camera/AP
- -20 ~ 70 degrees C wide operating temperature



### LRP-101UE

- 1-port UTP with passive PoE PD
- 1-port 10/100TX RJ45 with 802.3at PoE+ PSE to remote PoE IP camera/AP
- -20 ~ 70 degrees C wide operating temperature



### LRP-104CE

- 1-port BNC with passive PoE PD
- 4-port 10/100TX RJ45 with IEEE 802.3at PoE+ PSE to remote PoE IP camera/AP
- -20 ~ 70 degrees C wide operating temperature

